

S.I. 116 of 2024

FISHERIES ACT, 2014

(Act 20 of 2014)

**Fisheries (Designation of Aquaculture Development Zones)
Regulations, 2024**

Arrangement of Regulations

Regulations

1. Citation
2. Interpretation
3. Designation of areas
4. Coordinates

S.I. 116 of 2024

FISHERIES ACT, 2014

*(Act 20 of 2014)***Fisheries (Designation of Aquaculture Development Zones)
Regulations, 2024**

In the exercise of the powers conferred by section 77(2)(p) of the Fisheries Act, 2014, the Minister responsible for fisheries makes the following regulations —

Citation

1. These regulations may be cited as the Fisheries (Designation of Aquaculture areas) Regulations, 2024.

Interpretation

2. In these regulations, unless the context otherwise requires —

“Minister” means the Minister responsible for fisheries;

“potential farm sites” means the area consisting of the water column and the seabed underneath it designated as areas for the Development of Aquaculture as illustrated in the First Schedule.

Designation of areas

3. The areas described in schedule 1 shall be the designated potential farm sites consisting of the water column and the seabed underneath it as potential areas for the Development of Aquaculture.

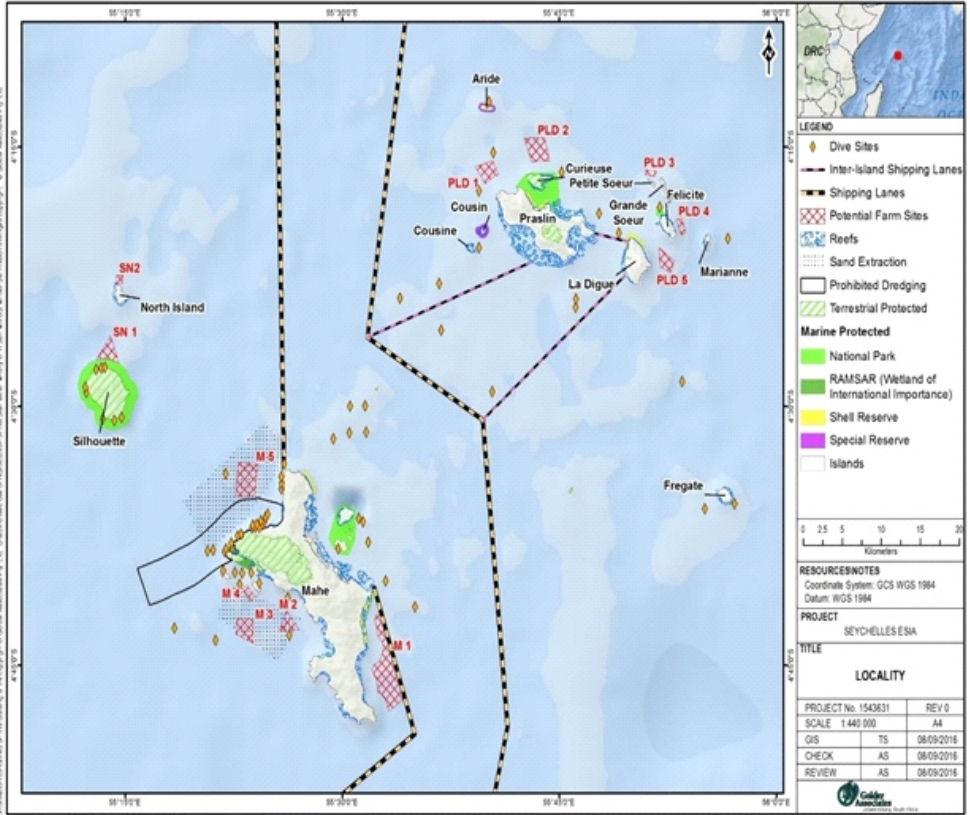
Coordinates

4. The coordinates corresponding to each of the designated potential farm sites shall be as specified in the second schedule.

SCHEDULE 1

The potential farm sites areas illustrated

ADZs Sea based:



SCHEDULE 2

The coordinates for the potential farm sites as illustrated in the first schedule are as follows —

Coordinates of the proposed open ocean Aquaculture Development Zones

Info:

Geographic Coordinate System: GCS_WGS_1984

Datum: D_WGS_1984

Prime Meridian: Greenwich Angular

Unit: Degree

ADZ Name	Site Location	Longitude	Latitude
PLD 1	Anse Lazio Area	55.65325	-4.26935
		55.67348	-4.2637
		55.67348	-4.2637
		55.68002	-4.27738
		55.68002	-4.27738
		55.67526	-4.27827
		55.67526	-4.27827
		55.66515	-4.286
		55.66515	-4.286
		55.65325	-4.26935
		55.65325	-4.26935
55.65325	-4.26935		

ADZ Name	Site Location	Longitude	Latitude
PLD2	Curieuse Area	55.70947	-4.24198
		55.73296	-4.24109
		55.73296	-4.24109
		55.73861	-4.2637
		55.73861	-4.2637
		55.71839	-4.26459
		55.71839	-4.26459
		55.70947	-4.24198
		55.70947	-4.24198
		55.70947	-4.24198

ADZ Name	Site Location	Longitude	Latitude
PLD 3	Petite Soeur Area	55.84926	-4.27262
		55.86116	-4.27321
		55.86116	-4.27321
		55.86086	-4.27886
		55.86086	-4.27886
		55.84926	-4.27738
		55.84926	-4.27738
		55.84926	-4.27262
		55.84926	-4.27262
		55.84926	-4.27262

ADZ Name	Site Location	Longitude	Latitude
PLD 4	Felicite Area	55.88436	-4.32051
		55.8906	-4.31902
		55.8906	-4.31902
		55.89596	-4.3327
		55.89596	-4.3327
		55.8909	-4.33567
		55.8909	-4.33567
		55.88436	-4.32051
		55.88436	-4.32051
		55.88436	-4.32051

ADZ Name	Site Location	Longitude	Latitude
PLD 5	La Digue Area	55.88227	-4.36006
		55.87811	-4.37166
		55.87811	-4.37166
		55.86592	-4.36601
		55.86592	-4.36601
		55.86502	-4.34727
		55.86502	-4.34727
		55.88227	-4.36006
		55.88227	-4.36006
		55.88227	-4.36006

ADZ Name	Site Location	Longitude	Latitude
M1	Anse Aux Pins Area	55.54439	-4.69735
		55.57116	-4.78242
		55.57116	-4.78242
		55.55391	-4.79432
		55.55391	-4.79432
		55.55272	-4.79223
		55.55272	-4.79223
		55.55212	-4.78837
		55.55212	-4.78837
		55.55123	-4.78628
		55.55123	-4.78628
		55.55004	-4.78331
		55.55004	-4.78331
		55.54766	-4.78093
		55.54766	-4.78093
		55.54588	-4.77825
		55.54588	-4.77825
		55.54409	-4.77647
		55.54409	-4.77647
		M1	Anse Aux Pins Area
55.54231	-4.77617		
55.54142	-4.77587		
55.54142	-4.77587		
55.54082	-4.77141		
55.54082	-4.77141		
55.54023	-4.76606		
55.54023	-4.76606		
55.53933	-4.76338		
55.53933	-4.76338		
55.53755	-4.76041		
55.53755	-4.76041		
55.53666	-4.75922		
55.53666	-4.75922		
55.53606	-4.75773		
55.53606	-4.75773		
55.53487	-4.75565		
55.53487	-4.75565		
55.53458	-4.75386		
55.53458	-4.75386		
55.53577	-4.75		
55.53577	-4.75		
55.53874	-4.74821		
55.53874	-4.74821		
55.54201	-4.74702		

		55.54201	-4.74702
		55.5435	-4.74554
		55.5435	-4.74554
		55.54469	-4.74256
		55.54469	-4.74256
		55.54588	-4.73989
		55.54588	-4.73989
		55.54647	-4.73721
		55.54647	-4.73721
		55.54677	-4.73572
		55.54677	-4.73572
		55.54677	-4.73156
		55.54677	-4.73156
		55.54677	-4.72858
		55.54677	-4.72858
		55.54588	-4.72739
		55.54588	-4.72739
		55.54439	-4.72531
		55.54439	-4.72531
		55.54231	-4.72382
		55.54231	-4.72382
		55.54112	-4.72144
		55.54112	-4.72144
		55.54023	-4.71936
		55.54023	-4.71936
		55.54023	-4.71579
		55.54023	-4.71579
		55.53963	-4.71341
		55.53963	-4.71341
M1	Anse Aux Pins Area	55.53874	-4.71044
		55.53874	-4.71044
		55.53814	-4.70747
		55.53814	-4.70747
		55.53755	-4.70449
		55.53755	-4.70449
		55.53814	-4.703
		55.53814	-4.703
		55.53844	-4.70181
		55.53844	-4.70181
		55.53933	-4.70062
		55.53933	-4.70062
		55.54112	-4.69973
		55.54112	-4.69973
		55.54201	-4.69884
		55.54201	-4.69884
		55.54231	-4.69824
		55.54231	-4.69824
		55.54439	-4.69735
		55.54439	-4.69735
		55.54439	-4.69735

ADZ Name	Site Location	Longitude	Latitude
M2	Trois Banc Area	55.451	-4.71579
		55.4272	-4.71698
		55.4272	-4.71698
		55.43583	-4.69706
		55.43583	-4.69706
		55.451	-4.71579
		55.451	-4.71579
		55.451	-4.71579

ADZ Name	Site Location	Longitude	Latitude
M3	Stock Patch Area	55.39746	-4.70568
		55.39776	-4.72888
		55.39776	-4.72888
		55.37753	-4.71966
		55.37753	-4.71966
		55.37872	-4.70449
		55.37872	-4.70449
		55.39746	-4.70568
		55.39746	-4.70568
		55.39746	-4.70568

ADZ Name	Site Location	Longitude	Latitude
M4	Ile Therese Area	55.39984	-4.68308
		55.39478	-4.68873
M4	Ile Therese Area	55.39478	-4.68873
		55.393	-4.68724
		55.393	-4.68724
		55.39121	-4.68516
		55.39121	-4.68516
		55.38973	-4.68337
		55.38973	-4.68337
		55.38824	-4.68189
		55.38824	-4.68189
		55.38735	-4.67951
		55.38735	-4.67951
		55.38645	-4.67832
		55.38645	-4.67832
		55.38556	-4.67623
		55.38556	-4.67623
		55.38705	-4.67505
		55.38705	-4.67505
		55.38854	-4.67415
		55.38854	-4.67415
		55.39092	-4.67296
		55.39092	-4.67296
		55.3933	-4.67564
		55.3933	-4.67564
		55.39419	-4.67742
		55.39419	-4.67742
		55.39567	-4.67891
		55.39567	-4.67891
		55.39776	-4.6807
55.39776	-4.6807		
55.39776	-4.68099		
55.39776	-4.68099		
55.39984	-4.68308		
55.39984	-4.68308		
55.39984	-4.68308		

ADZ Name	Site Location	Longitude	Latitude
M5	Beau Vallon Area	55.37723	-4.5873
		55.38021	-4.55458
		55.38021	-4.55458
		55.40281	-4.55607
		55.40281	-4.55607
		55.39895	-4.58641

ADZ Name	Site Location	Longitude	Latitude
SN1	North Silhouette Area	55.24309	-4.45851
		55.23923	-4.45762
		55.23923	-4.45762
		55.23625	-4.45643
SN1	North Silhouette Area	55.23625	-4.45643
		55.23357	-4.45554
		55.23357	-4.45554
		55.23179	-4.45494
		55.23179	-4.45494
		55.22881	-4.45494
		55.22881	-4.45494
		55.22525	-4.45435
		55.22525	-4.45435
		55.22078	-4.45494
		55.22078	-4.45494
		55.21751	-4.45584
		55.21751	-4.45584
		55.21662	-4.45584
		55.21662	-4.45584
		55.23328	-4.43204
55.23328	-4.43204		
55.24309	-4.45851		
55.24309	-4.45851		
55.24309	-4.45851		

ADZ Name	Site Location	Longitude	Latitude
SN2	North of North Island Area	55.23982	-4.37434
		55.24785	-4.37434
		55.24785	-4.37434
		55.24726	-4.38207
		55.24726	-4.38207
		55.23979	-4.38254
		55.23979	-4.38254
		55.23982	-4.37434
		55.23982	-4.37434
55.23982	-4.37434		

MADE this 30th day of December, 2024.

**JEAN-FRANÇOIS FERRARI
MINISTER OF FISHERIES**
